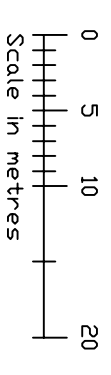
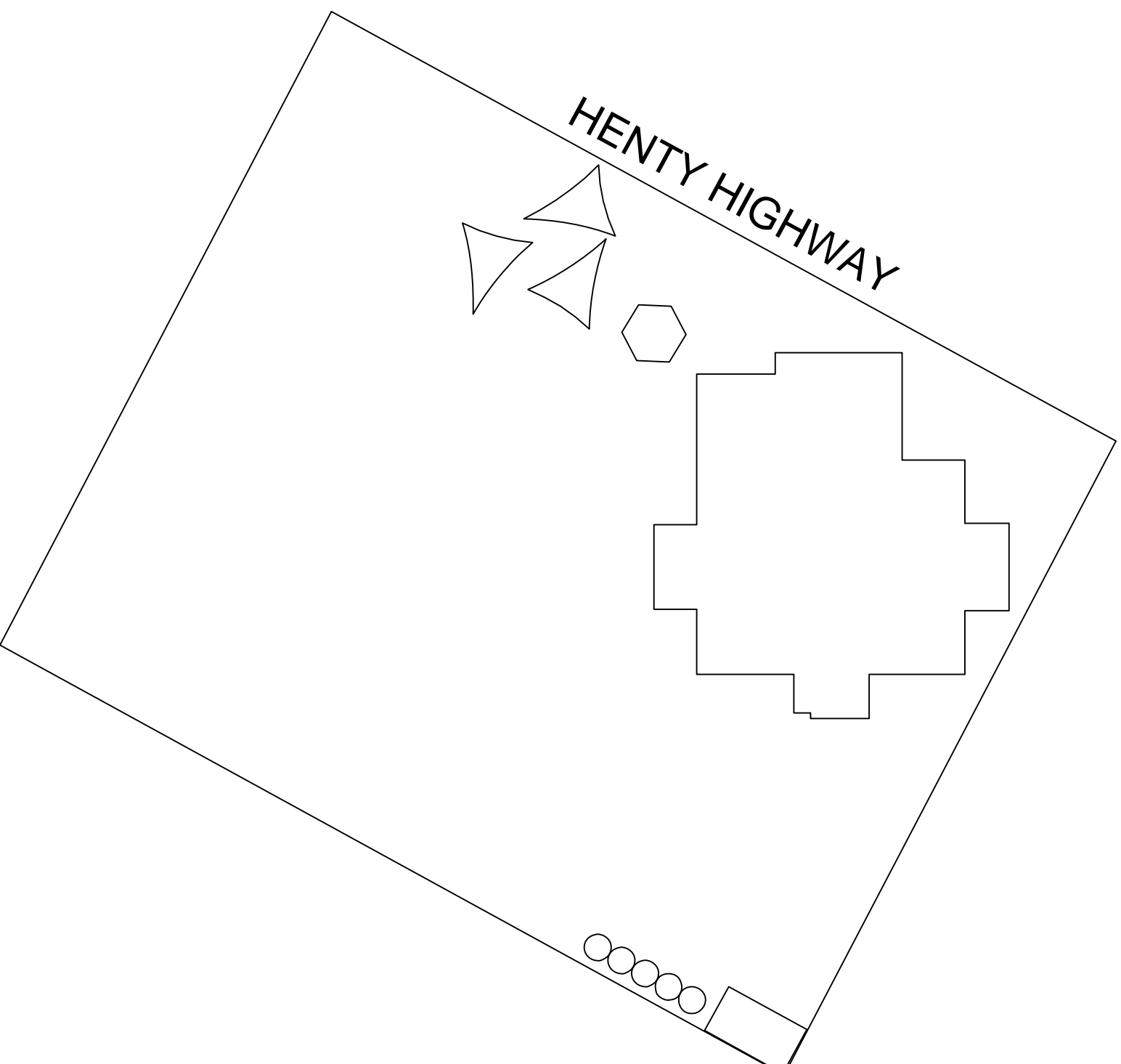


NOTES:



site plan

Campus Address
HENTY HIGHWAY
VIA HORSHAM 3401

Region No:
29
GRAMPIANS



Department of Education and
Early Childhood Development

These drawings were prepared by Logica
for the Department of Education and Early Childhood Development
Any queries relating to these drawings should be referred to the
Schools Asset Data Unit, Level 3,
2 Treasury Place, East Melbourne, 3002. Ph 9637 3075 Fax 9637 3070

THESE DRAWINGS ARE FOR INFORMATION PURPOSES ONLY. APPROXIMATE SCALE ONLY.

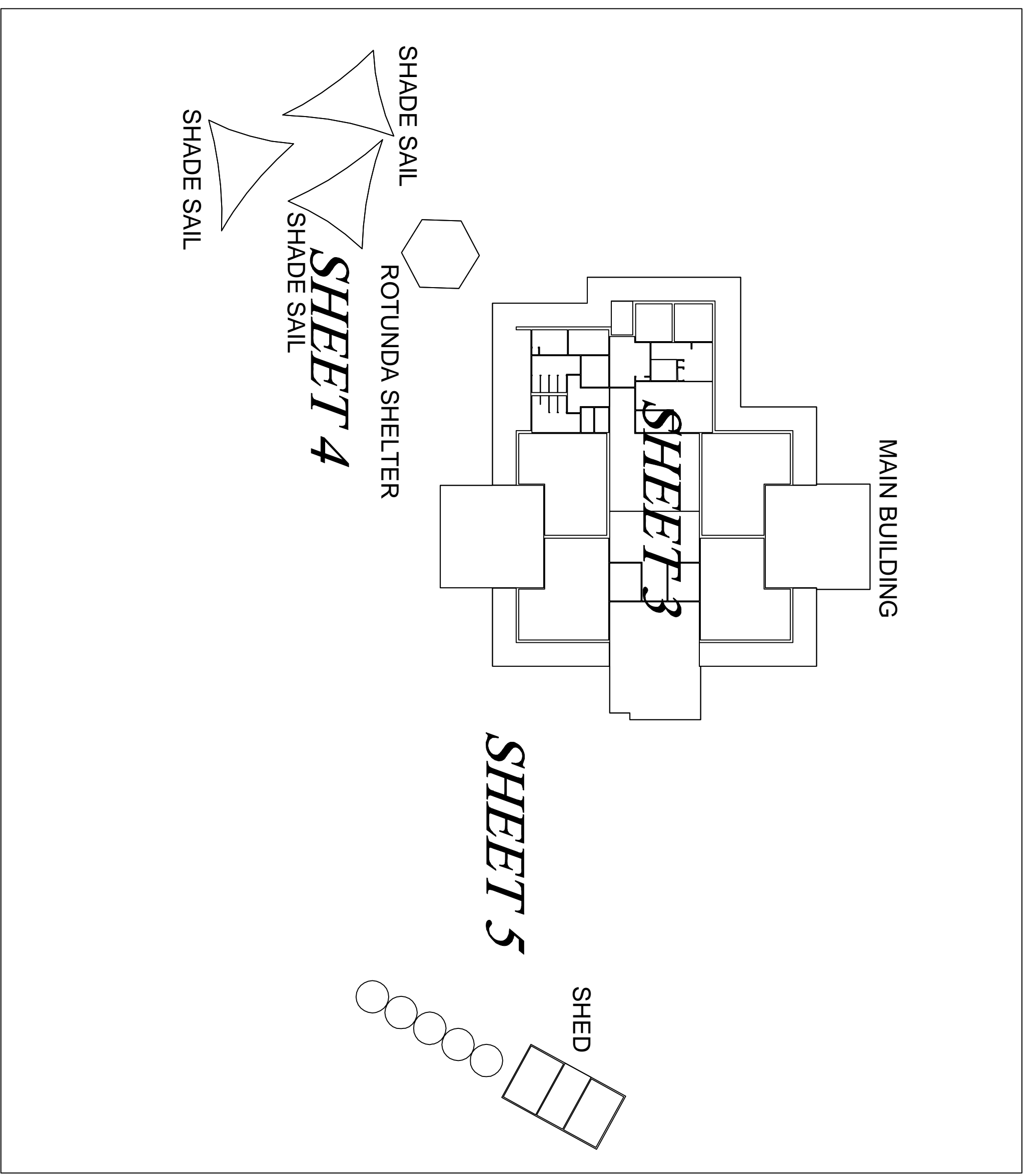
Schools Assets Management System
HORSHAM WEST-HAVEN
PRIMARY SCHOOL

Revised:
7-10-09

School No:
4697

Campus No:
2

Sheet
1 of 6



MAIN BUILDING

SHEET 3

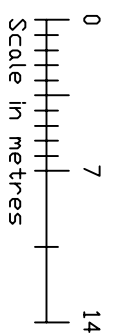
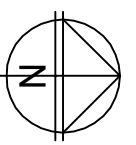
ROTUNDA SHELTER

SHEET 4

SHADE SAIL

SHED

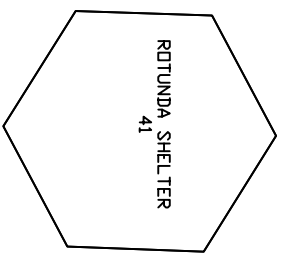
SHEET 5



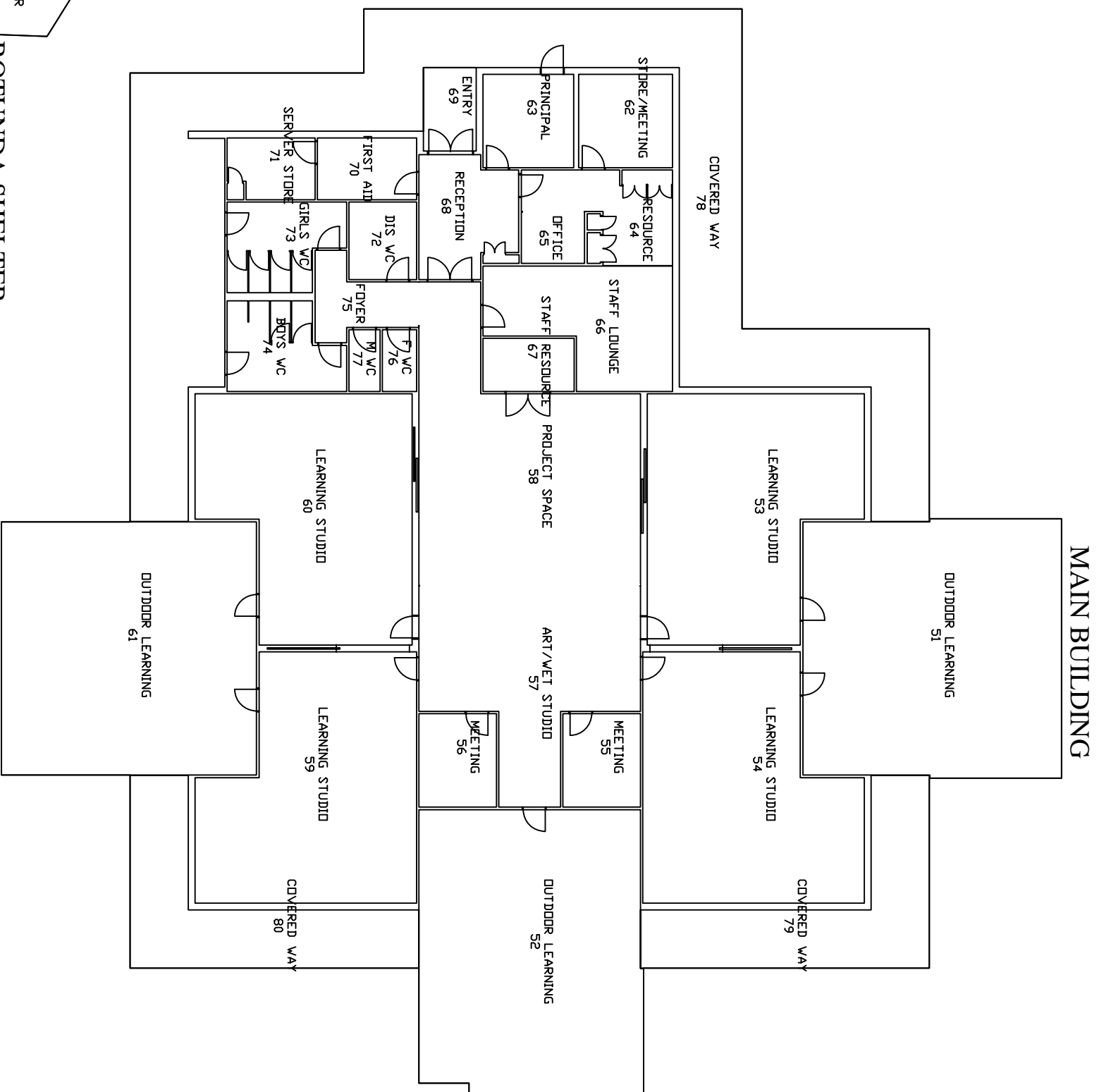
ground floor

key plan

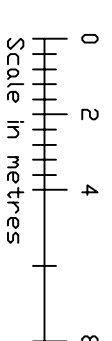
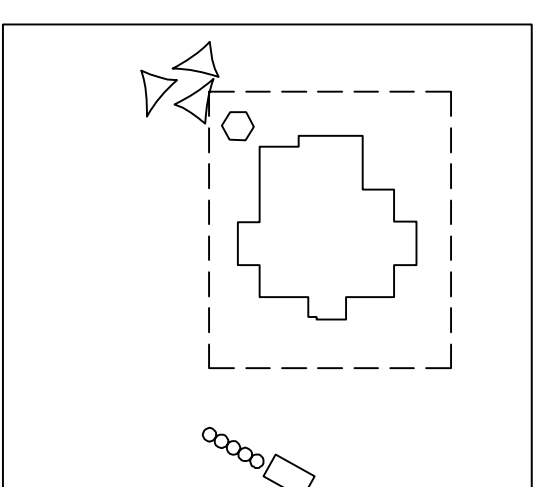
HORSHAM WEST-HAVEN
PRIMARY SCHOOL



ROTUNDA SHELTER



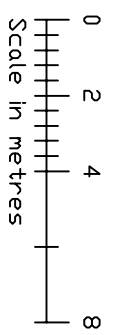
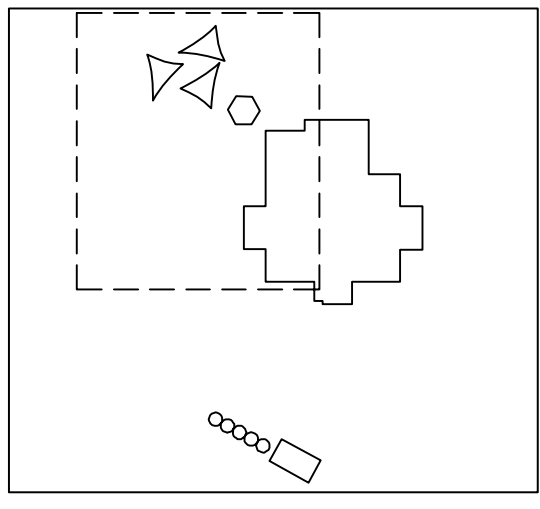
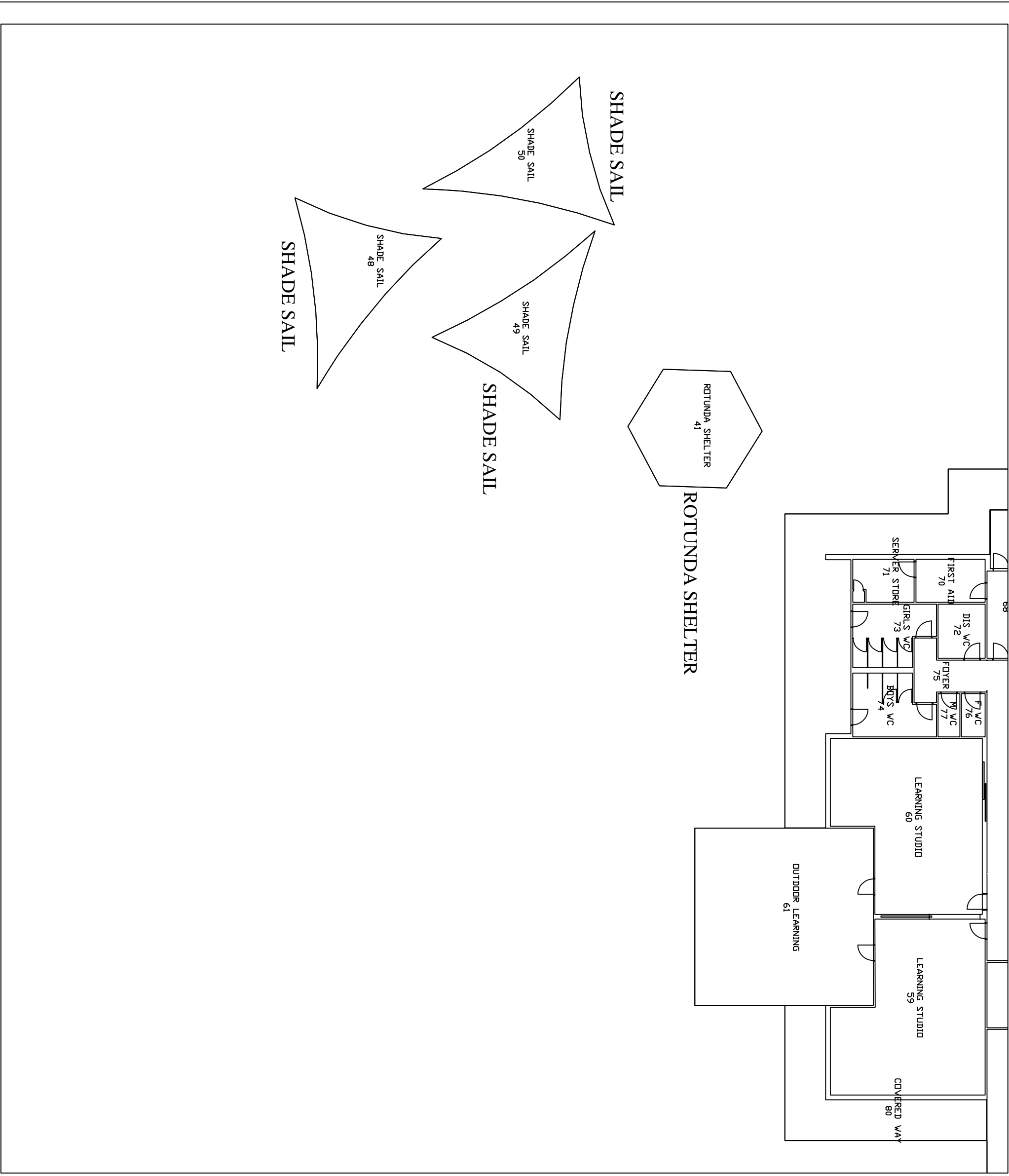
MAIN BUILDING



ground floor

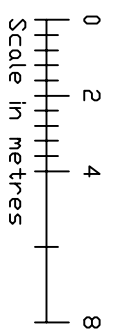
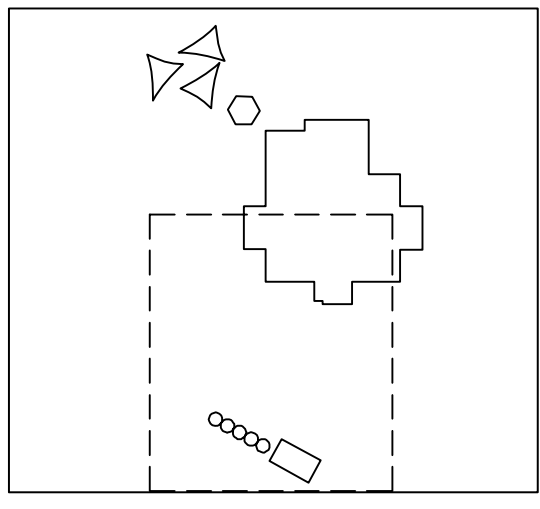
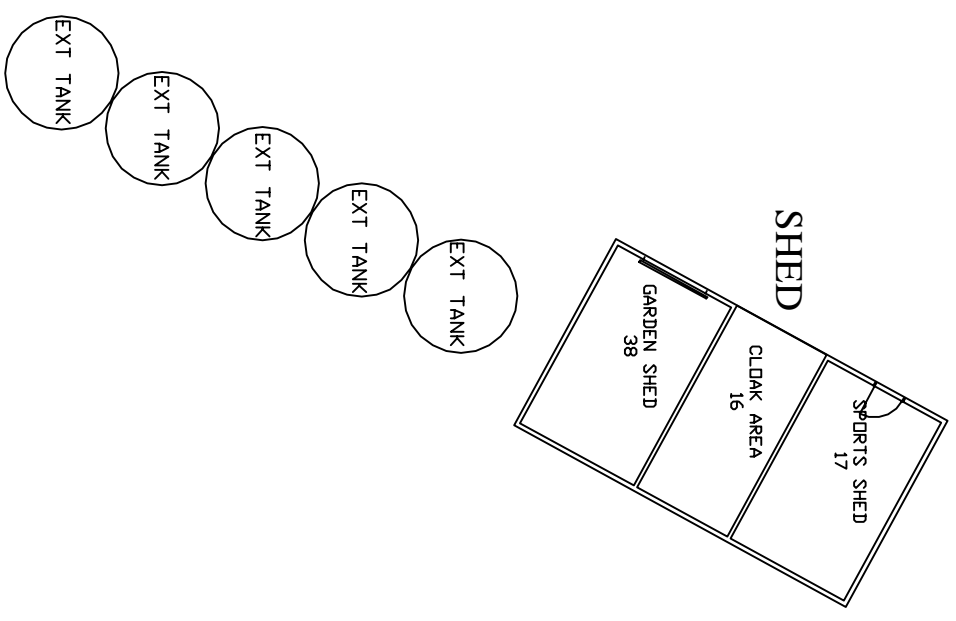
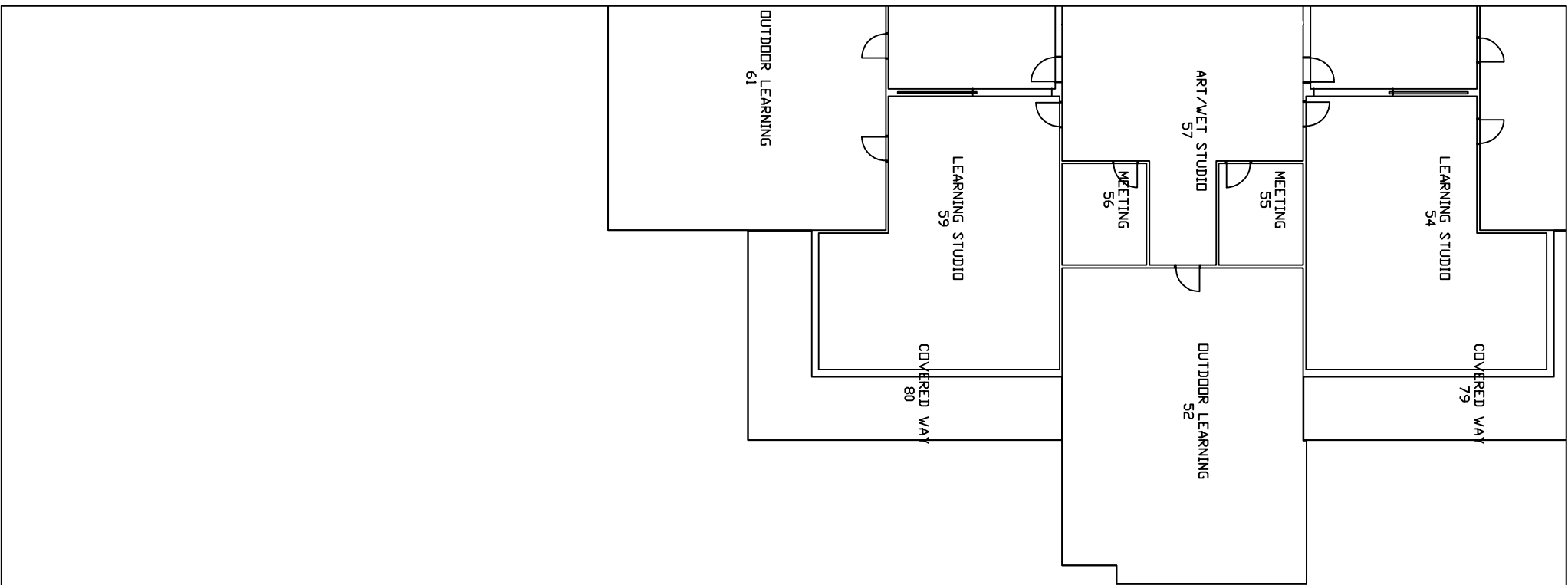
plan

HORSHAM WEST-HAVEN
PRIMARY SCHOOL



ground floor
plan

HORSHAM WEST-HAVEN
PRIMARY SCHOOL



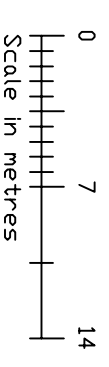
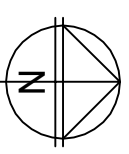
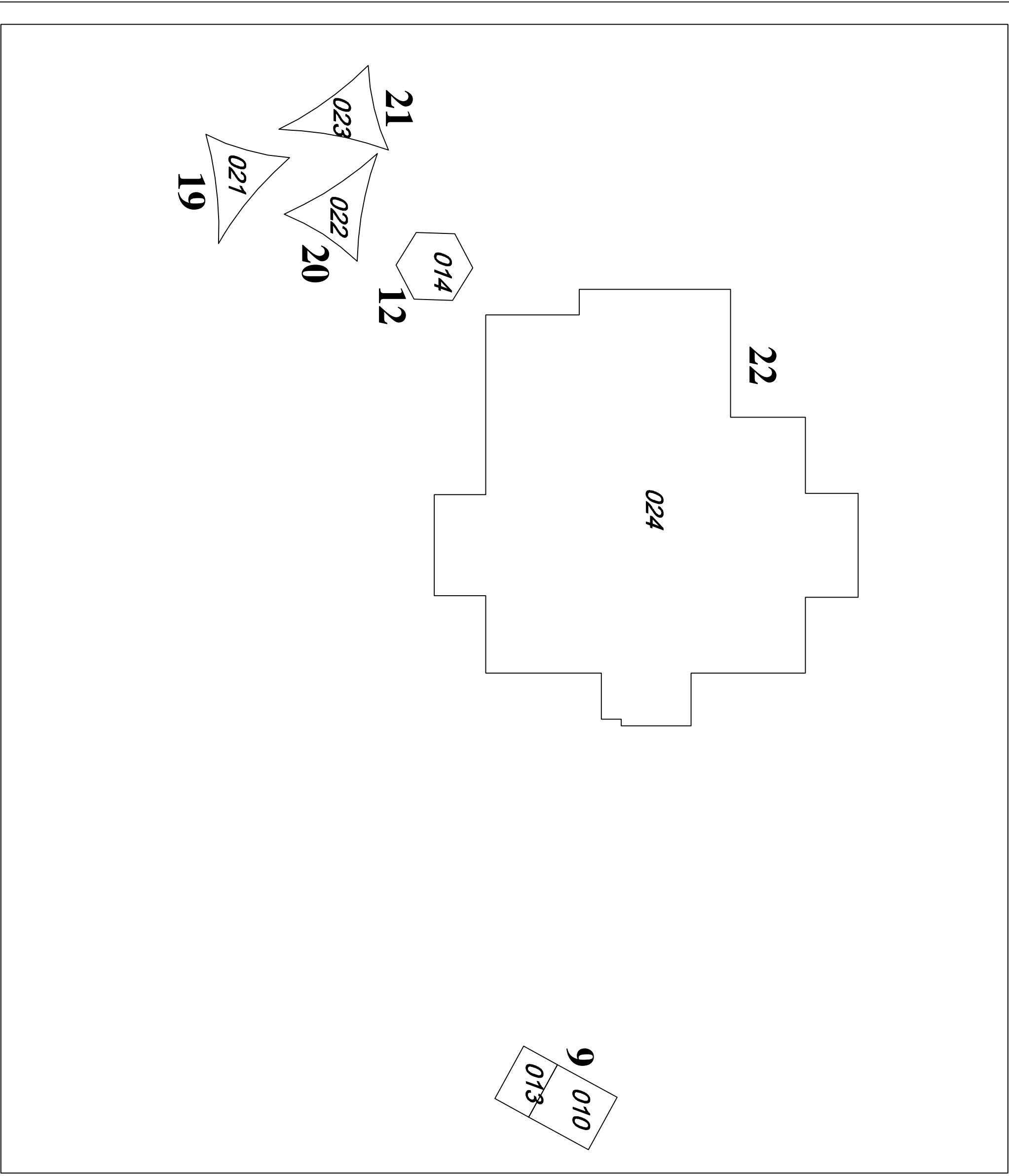
ground floor

plan

HORSHAM WEST-HAVEN
PRIMARY SCHOOL

Legend:

Style	Description
034	construction zone no.
20	building no.



ground floor

construction zone plan

HORSHAM WEST-HAVEN
PRIMARY SCHOOL